



**RICHARD
LIPSCOMB
JR., DDS**

Dr. Lipscomb is a graduate of The University of Howard College of Dentistry and an international speaker with lectures specializing in restorative and implant dentistry. He has been performing restorative procedures for over 20 years and placing mini dental implants since 2006.

During that time, he has overseen hundreds of MDI cases and has gained the experience to provide hands-on training for restorative and implant procedures to other doctors.

Dr. Lipscomb is a speaker for Catapult Education's Speakers Bureau and a key opinion leader for manufacturers including Kettenbach. He serves on the editorial advisory board for *Dental Product Shopper* and has written articles for multiple publications. Dr. Lipscomb's unique dental experience includes both private practice and public health service in community health centers.

KETTENBACH

Versatile Materials for Restorative Efficiency

When I'm choosing materials for a restorative procedure, I want to use products from a company I can rely on.

With Kettenbach, I have found that every product they put out is very carefully developed and of high quality. In fact, as a longtime practitioner and lecturer, I tend to put products under heavy scrutiny and look for any deficiency. I'll ask, "What might another dentist find wrong with this product?" When it comes to Kettenbach's Visalys filling materials, I can say with confidence that they excel across all key criteria.

Visalys Fill and Visalys Flow are nanohybrid, light-cured filling materials suitable for all classes of restorations in both the anterior and posterior. They can be used anywhere, and that speaks to their versatility. Visalys Fill is a workhorse composite and it matches up extremely well with Visalys Flow, particularly when I'm working in the posterior on a Class II or a restoration with a deeper box to fill.

My favorite aspect of Visalys Fill is how it handles. The consistency is right where it needs

to be—not too hard, not too soft, and not sticky. While dentists' preferences for handling varies, this material seems to meet everyone's needs. It has high strength and I know I can count on it for long-term durability. I've had no problems finding the shade I need because the system's 5 primary shades have chameleon characteristics and cover the entire VITA shade scale.

In a typical case, I'll prepare the tooth and etch the enamel around the preparation before applying a light-cure bonding agent. I'll then apply the selected shade of Visalys Fill in layers up to 2 mm and light cure for 20 seconds. The material's consistency allows me to be very efficient when placing and

4 BENEFITS OF VISALYS FILL

- Chameleon effect covers all 16 VITA shades with just 5 shades and 2 additional colors for special situations.
- Does not stick to the instrument and offers ideal stability.
- Outstanding mechanical properties with high filler content of 87% and high flexural strength of 147 MP.
- Minimal discoloration due to low water absorption and low wear thanks to sophisticated filler technology.



Figure 1—Pre-op: A 35-year-old female presented with several carious lesions and several worn-out composites. Tooth No. 30, asymptomatic, has an occlusal restoration that is over 5 years old, with worn occlusal surfaces, open margins, and accumulation of stains due to wear and voids.

shaping the material, and it has excellent polishability that leads to a great finish. In cases where I need to add the flowable, I find that Visalys Flow is ideal—not too runny, no voids or bubbles, and I have

precision control over the amount being dispensed.

With Visalys composites, I'm yet to find a reason any doctor wouldn't want to make the switch. They're really good

and very easy to work with—for every restorative situation. You're going to get a great restoration that will be durable, strong, and esthetic, and most importantly, the patient will be happy.



Figure 2—Cavity prep: Removal of the entire existing composite material and stains. The margins were slightly beveled.

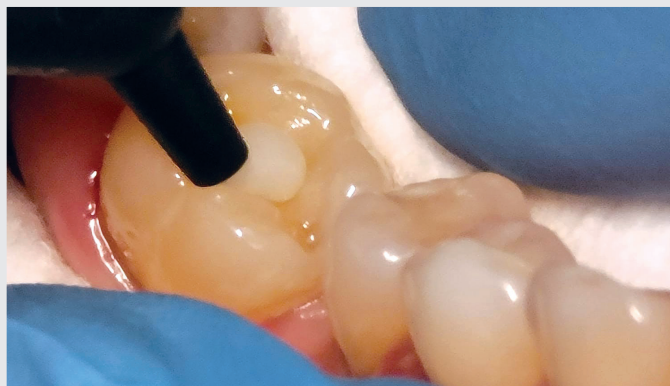


Figure 3—Placement of Visalys Fill with pre-loaded tips and football/acorn shaped burnishers. The material (shade A2) has medium viscosity (not too stiff, not too soft), and is easy to handle, doesn't stick to instruments, and moves where you want it to go.



Figure 4—Contouring and polishing of Visalys Fill after light curing was accomplished with a gold egg-shaped finishing bur.



Figure 5—Visalys Fill material has a chameleon effect that allows for the material to blend into the cavity prep, so shade matching is made easy.

GO-TO PRODUCT USED IN THIS CASE

VISALYS FILL

Visalys Fill is a radiopaque nanohybrid filling composite for all Class I to VI fillings. It can be molded very well and impresses with its permanently good stability. The specially developed Flex Shade System enables efficient work with only 7 shades for esthetic restorations. The coveted chameleon effect of the new nanohybrid materials allows clinicians to choose the right color quickly. The pleasant handling and nonstickiness of Visalys Fill makes work easier, while excellent polishability quickly leads to a brilliant finish.

KETTENBACH

877.532.2123
www.kettenbachusa.com

